

COUNTER LM C.E. LM  
 VERIFY LM D.E. LM  
 PROOF \_\_\_\_\_  
 FEES \$ 28.00  
 CHECK # 5816  
 CHG \_\_\_\_\_ CASH \_\_\_\_\_  
 REFUND \_\_\_\_\_ CREDIT \_\_\_\_\_  
 SHORT \_\_\_\_\_ NCR \_\_\_\_\_

FILED SARPY COUNTY NEBRASKA  
 INSTRUMENT NUMBER

2018-03210

02/13/2018 2:23:11 PM

*Floyd J. Rouding*

REGISTER OF DEEDS



**SANITARY AND IMPROVEMENT DISTRICT STATEMENT  
 SARPY COUNTY, NEBRASKA**

STATE OF NEBRASKA        )  
   ) ss.  
 COUNTY OF SARPY         )

Mark Boyer, being first duly sworn, states that he is the Clerk of Sanitary and Improvement District No. 328 of Sarpy County, Nebraska and makes the following statement regarding same:

1. District Number: 328
2. Outer Boundaries: See Exhibit "A" attached hereto and by this reference made a part hereof.

3. The purpose of this District shall be acquiring, installing, repairing, maintaining, renewing, operating and replacing electrical service lines and conduits, a sewer system, a water system, a system of sidewalks, public roads, streets and highways, a civil defense warning system, to contract for water for fire protection and for resale to the residents of the District, and to contract for gas and electricity, for street lighting for the public streets and highways within the District and to acquire, improve and operate public parks, playgrounds and recreational facilities. The District shall have all of the powers and authorities as are permitted by law, to achieve the purposes herein above set forth, including, but not in limitation of the foregoing, the power and authority to contract with corporations, utility companies, or municipalities for water for fire protection and for resale to the residents of the District, and for electricity and gas, for street lighting of the public streets and highways within the District and for the disposal of sewage in the use of existing sewer improvement facilities and for the operation and maintenance of electrical service lines and conduits.

4. The District has the power to levy an unlimited property tax to pay its debts and its expenses of operation and maintenance.

5. The District is required by statute to levy special assessments on property in the District to the full extent of special benefits arising by reason of improvements installed by it.

6. In all years when a budget is required by law, the District's annual budget is filed with

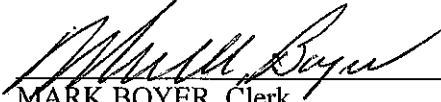
When recorded return to:  
 Larry A. Jobeun  
 Fullenkamp Jobeun Johnson & Beller  
 11440 West Center Road  
 Omaha, NE 68144

R+K

the County Clerk, which budget shows anticipated revenue and expenses, levy, and indebtedness of the District.

7. The actual current levy of the District may be obtained from the County Clerk.

8. A copy of the District's annual financial audit is on file with the Clerk of the District and the State Auditor of Public Accounts.

  
MARK BOYER, Clerk  
Sanitary and Improvement District  
No. 328 of Sarpy County, Nebraska

SUBSCRIBED and sworn to before me this 29<sup>th</sup> day of January, 2018.

[Seal] 

  
Notary Public

When recorded return to:  
Larry A. Jobeun  
Fullenkamp Jobeun Johnson & Beller  
11440 West Center Road  
Omaha, NE 68144

B

# EXHIBIT "A"

## LEGAL DESCRIPTION

A TRACT OF LAND BEING PART OF TAX LOTS 7 AND 8, TAX LOTS LOCATED IN THE NE1/4 OF SECTION 5, TOWNSHIP 13 NORTH, RANGE 12 EAST OF THE 6TH P.M., SARPY COUNTY, NEBRASKA, MORE PARTICULARLY DESCRIBED AS FOLLOWS:

COMMENCING AT THE SOUTHWEST CORNER OF SAID NE1/4 OF SECTION 5, THENCE N02°57'20"W (ASSUMED BEARING) ALONG THE WEST LINE OF SAID NE1/4 OF SECTION 5, A DISTANCE OF 709.56 FEET TO THE POINT OF BEGINNING; THENCE CONTINUING N02°57'20"W ALONG SAID WEST LINE OF THE NE1/4 OF SECTION 5, A DISTANCE OF 1355.42 FEET; THENCE N87°02'40"E, A DISTANCE OF 50.00 FEET TO EASTERLY RIGHT-OF-WAY LINE OF 114TH STREET; THENCE NORTHERLY ALONG SAID EASTERLY RIGHT-OF-WAY LINE OF 114TH STREET ON THE FOLLOWING NINE (9) DESCRIBED COURSES: (1) N02°57'20"W ON A LINE 50.00 FEET EAST OF AND PARALLEL WITH SAID WEST LINE OF NE1/4 OF SECTION 5, A DISTANCE OF 122.00 FEET; (2) THENCE N54°01'14"E, A DISTANCE OF 23.84 FEET; (3) THENCE N27°32'16"E, A DISTANCE OF 104.45 FEET; (4) THENCE N18°01'45"E, A DISTANCE OF 78.19 FEET; (5) THENCE S88°24'30"W, A DISTANCE OF 42.01 FEET; (6) THENCE N05°20'30"W, A DISTANCE OF 48.04 FEET; (7) THENCE N13°57'33"W, A DISTANCE OF 110.02 FEET; (8) THENCE N18°19'55"W, A DISTANCE OF 82.97 FEET; (9) THENCE N41°06'18"E, A DISTANCE OF 13.15 FEET TO THE INTERSECTION OF SAID EASTERLY RIGHT-OF-WAY LINE OF 114TH STREET AND THE SOUTHERLY RIGHT-OF-WAY LINE OF SCHRAM ROAD; THENCE EASTERLY ALONG SAID SOUTHERLY RIGHT-OF-WAY LINE OF SCHRAM ROAD ON THE FOLLOWING FIVE (5) DESCRIBED COURSES: (1) N83°06'14"E, A DISTANCE OF 176.54 FEET; (2) THENCE N87°19'42"E ON A LINE 50 FEET SOUTH OF AND PARALLEL WITH THE NORTH LINE OF SAID NE1/4 OF SECTION 5, A DISTANCE OF 1089.75 FEET; (3) THENCE N24°48'08"E, A DISTANCE OF 13.66 FEET; (4) THENCE N87°23'30"E, A DISTANCE OF 60.30 FEET; (5) THENCE N68°16'07"E, A DISTANCE OF 15.16 FEET TO A POINT 33 FEET SOUTH OF SAID NORTH LINE OF THE NE1/4 OF SECTION 5; THENCE N02°40'18"W, A DISTANCE OF 33.00 FEET TO SAID NORTH LINE OF THE NE1/4 OF SECTION 5; THENCE N87°19'42"E ALONG SAID NORTH LINE OF THE NE1/4 OF SECTION 5, A DISTANCE OF 736.20 FEET; THENCE S02°40'18"E, A DISTANCE OF 33.00 FEET TO SAID SOUTHERLY RIGHT-OF-WAY LINE OF SCHRAM ROAD; THENCE EASTERLY ALONG SAID SOUTHERLY RIGHT-OF-WAY LINE OF SCHRAM ROAD ON THE FOLLOWING TWO (2) DESCRIBED COURSES: (1) N89°59'57"E, A DISTANCE OF 150.16 FEET; (2) THENCE S60°25'57"E, A DISTANCE OF 18.75 FEET; THENCE S42°20'24"W, A DISTANCE OF 153.22 FEET; THENCE S41°39'00"W, A DISTANCE OF 419.81 FEET; THENCE S41°18'03"W, A DISTANCE OF 312.10 FEET; THENCE S46°04'54"W, A DISTANCE OF 68.45 FEET; THENCE S59°55'08"W, A DISTANCE OF 501.24 FEET; THENCE S57°18'40"W, A DISTANCE OF 74.71 FEET; THENCE S56°32'12"W, A DISTANCE OF 228.60 FEET; THENCE S46°53'05"W, A DISTANCE OF 63.88 FEET; THENCE S25°41'24"W, A DISTANCE OF 73.33 FEET; THENCE S26°24'58"W, A DISTANCE OF 140.18 FEET; THENCE S45°44'51"W, A DISTANCE OF 182.36 FEET; THENCE N32°54'50"W, A DISTANCE OF 12.77 FEET; THENCE S57°31'57"W, A DISTANCE OF 354.69 FEET; THENCE S74°14'40"W, A DISTANCE OF 110.59 FEET; THENCE S02°52'39"W, A DISTANCE OF 21.11 FEET; THENCE N74°14'40"E, A DISTANCE OF 120.00 FEET; THENCE S19°39'31"E, A DISTANCE OF 156.18 FEET; THENCE S07°43'37"W, A DISTANCE OF 53.68 FEET; THENCE S37°45'55"W, A DISTANCE OF 87.70 FEET; THENCE S59°38'29"W, A DISTANCE OF 99.00 FEET; THENCE S87°02'40"W, A DISTANCE OF 232.93 FEET TO THE POINT OF BEGINNING.

SAID TRACT OF LAND CONTAINS A TOTAL AREA OF 2,308,883 SQUARE FEET OR 53.005 ACRES, MORE OR LESS.

PAGE 2 OF 2: SEE PAGE 1 FOR SKETCH



E & A CONSULTING GROUP, INC.  
Engineering Answers

### E & A CONSULTING GROUP, INC.

Engineering • Planning • Environmental & Field Services

10909 Mill Valley Road, Suite 100 • Omaha, NE 68154 Phone: 402.885.4700 • Fax: 402.895.3599

Drawn by: CJV Chkd by: Scale: 1" = 400' Date: 01/04/2018

Job No.: P2016.420.001

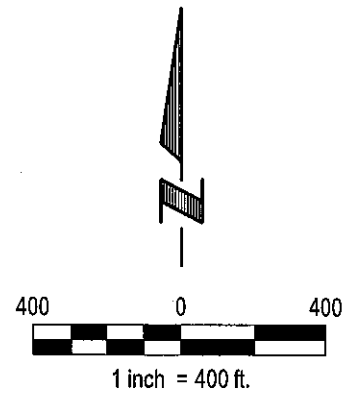
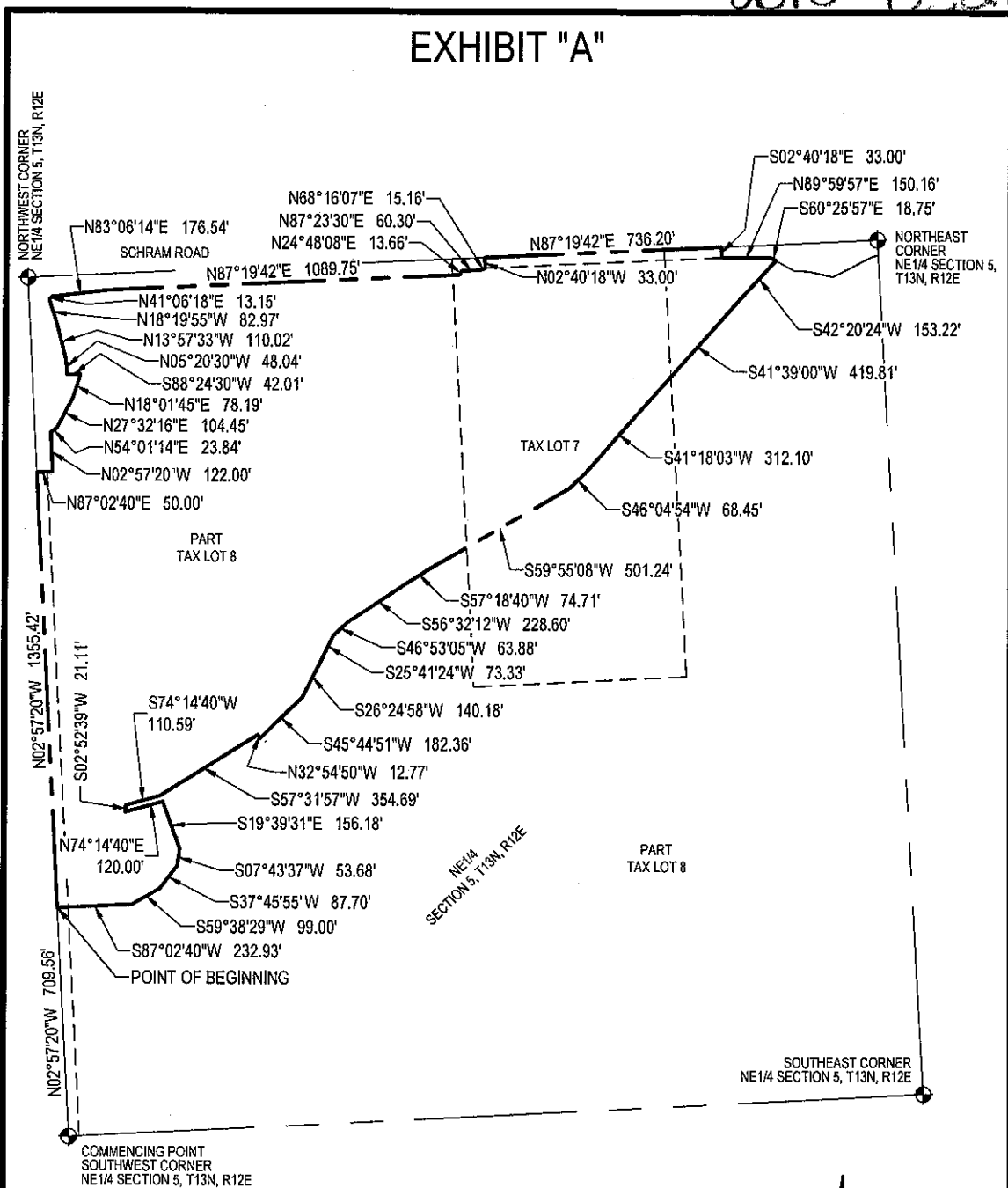
### SANITARY AND IMPROVEMENT DISTRICT BOUNDARY

PART OF THE NE1/4 SEC. 5, T13N, R12E  
SARPY COUNTY, NEBRASKA

2018-03210

C

# EXHIBIT "A"



PAGE 1 OF 2: SEE PAGE 2 FOR LEGAL DESCRIPTION

**E & A CONSULTING GROUP, INC.**  
Engineering Answers

**E & A CONSULTING GROUP, INC.**  
Engineering • Planning • Environmental & Field Services  
10909 Mill Valley Road, Suite 100 • Omaha, NE 68154 Phone: 402.895.4700 • Fax: 402.895.3599

Drawn by: CJV	Chkd by:	Scale: 1" = 400'	Date: 01/04/2018
Job No.: P2016.420.001			

**SANITARY AND IMPROVEMENT DISTRICT BOUNDARY**  
PART OF THE NE 1/4 SEC. 5, T13N, R12E  
SARPY COUNTY, NEBRASKA